

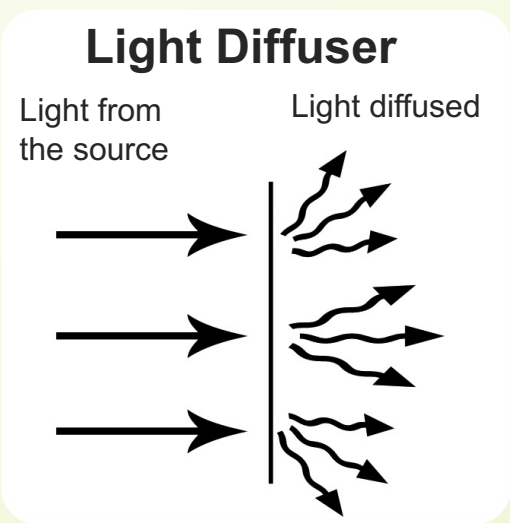
Light Diffusers:

Light diffusers soften light by spreading it out. This creates a softer light that cuts down on the contrast. This is a great tool. I use them most of the time. But some times I find that the image looks better with out a diffuser or even have it partially diffused.

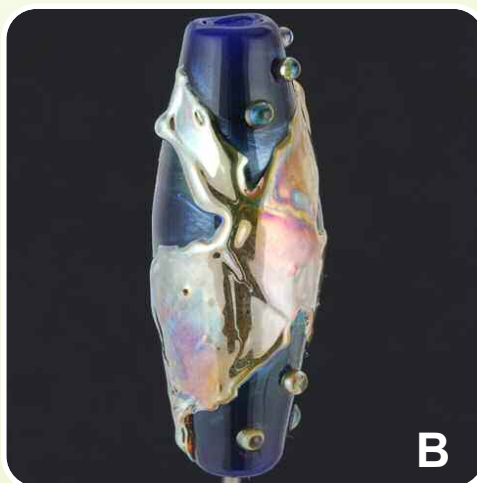
I do the partial diffusion a lot when I shoot dichroic in order to get the

dichroic crystals to really pop.

Have you ever made something with glass that reduces into metallic or a prismatic finish? And when you tried to take a photo you just weren't able to? If you use a diffuser, it spreads out the light you are able to capture the prismatic sheen.



Camera Settings: f 16, 1/5
Set up: 2 light



Camera Settings: f 16, 1/3
Set up: 2 light, 2 Diffusor

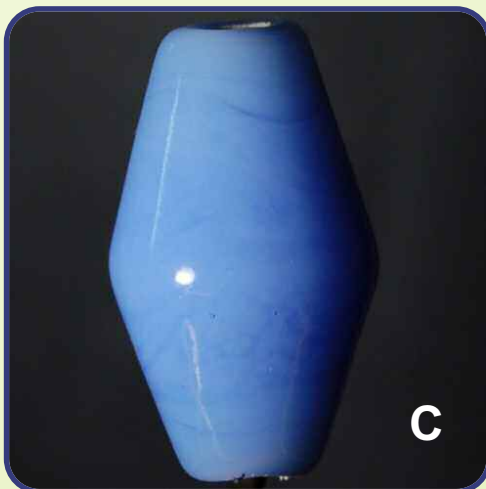
In **Examples A and B** you can see the differences. This bead was shot with a 2 light set up.

Example B used 2 diffusers and looks a lot better. The light is evenly spread and the base color glass is smoother looking. The qualities of the reducing shard are captured a lot better with the diffusers. It not only looks metallic but it also shows the subtle shifts in the color.

Example A wasn't able to capture that as well.

Light Bounce:

Diffusers are used to soften light, but light bounces are used to soft shadows. How it does it is it redirects soft light back at the subject reducing the contrast of shadows. Bounce lights are essential when shooting with one light set up. I use a bounce light 90% of the time.



Camera Settings: f 16, 1/3
Set up: 1 light



Camera Settings: f 16, 1/3
Set up: 1 light, 1 Bounce